



Purpose: This report provides up-to-date information regarding the drug supply in Philadelphia, Pennsylvania, United States of America, and is our first Quarterly Drug Checking Report to include quantitative data on the purity of fentanyl, xylazine, cocaine, methamphetamine, and more.

Overview: Traditional drugs (e.g., heroin, fentanyl, cocaine, methamphetamine) are commonly identified among drug samples in cities across the United States, albeit at varying purities and combinations. Novel psychoactive substances (NPS) continue to appear within the drug supply, masked as traditional drugs or added to traditional drug preparations. Nationally, the drug supply remains a dynamic and evolving environment, especially relating to primary active drug components and cutting agents or adulterants added to drug preparations. The drug supply and drug use trends can be different from city to city or even within a given community, requiring specific regional or local assessments. Accurate understanding of drug materials and the drug supply in real-time is imperative for effective public health and public safety preparedness and response.

Objective: A partnership between the Center for Forensic Science Research and Education (CFSRE) and the Philadelphia Department of Public Health (PDPH) has been established to accurately assess the drug supply in Philadelphia, Pennsylvania. This initiative was established as a comprehensive effort examining various drug materials and drug forms. Select drug testing results from samples obtained within the city were compiled for preparation of this report. The results reported herein represent a subset of the drug supply and not its entirety.

Acknowledgements: This report was prepared by Alex J. Krotulski, PhD; Jen Shinefeld, MS; Joshua DeBord, PhD; Daniel Teixeira da Silva, MD; and Barry K. Logan, PhD, F-ABFT. The authors acknowledge CFSRE and PDPH personnel for their contributions and involvements. This work is funded by the Centers for Disease Control and Prevention (CDC) through an Overdose Data to Action grant awarded to the city of Philadelphia. The opinions, findings, conclusions, and/or recommendations expressed in this publication are those of the authors and do not necessarily reflect those of the CDC or other federal, state, local, or private agencies. For more information about drug checking services or NPS Discovery, please contact npsdiscovery@cfsre.org or visit www.npsdiscovery.org.

Summary and Key Findings:

- ▶ 219 samples were tested between May and September 2022
- ▶ Fentanyl-xylazine (tranq-dope) proportions varied greatly
- ▶ The average fentanyl purity was 11.7% (range: 0.3-34.8%)
- ▶ The average xylazine purity was 33.8% (range: 0-64.8%)
- ▶ Most dope samples (91%) contained fentanyl and xylazine
- ▶ Synthetic cannabinoids remain dynamic and unpredictable
- ▶ Counterfeit Xanax tablets tested positive for clonazepam
- ▶ Cocaine purity varied greatly (average: 37.8%, range: 0.2-81.8%)

136 
 "Heroin" / Dope
 (Powder in Glassine Bag)

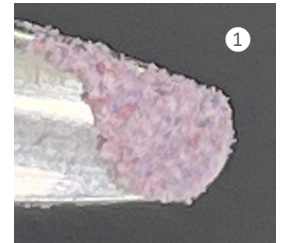
49 
 Powders / Crystals
 (E.g., Cocaine, Methamphetamine)

10 
 Pills / Tablets
 (E.g., Oxycodone, Xanax, Ecstasy)

24 
 Other
 (E.g., Cannabis, K2, "Unknown")

Date	Suspected	Drugs Identified
9/13/2022	Dope	Fentanyl (18.4%), Xylazine (26.9%), 4-ANPP (10.6%) [OPI=1.84]
9/21/2022	Dope	Fentanyl (6.6%), Xylazine (40.5%), 4-ANPP (1.0%), Procaine, Caffeine [OPI=0.69]
9/21/2022	Dope	Fentanyl (7.7%), Xylazine (32.4%), para-Fluorofentanyl (0.3%), 4-ANPP (0.7%) [OPI=0.78]
9/21/2022	Dope	Fentanyl (7.8%), Xylazine (26.6%), 4-ANPP (1.5%) [OPI=0.78]
9/21/2022	Dope	Fentanyl (8.2%), Xylazine (58.4%), 4-ANPP (0.6%) [OPI=0.82]
9/21/2022	Dope	Fentanyl (8.3%), Xylazine (26.3%), 4-ANPP (1.6%) [OPI=0.83] ①
9/21/2022	Dope	Fentanyl (8.8%), Xylazine (30.1%), 4-ANPP (1.7%) [OPI=0.88]
9/21/2022	Dope	Fentanyl (10.0%), Xylazine (36.8%), 4-ANPP (1.7%) [OPI=1.00] ②
9/21/2022	Dope	Fentanyl (11.2%), Xylazine (43.7%), 4-ANPP (1.7%) [OPI=1.12]
9/21/2022	Dope	Fentanyl (11.9%), Xylazine (38.0%), 4-ANPP (3.0%) [OPI=1.19]
9/21/2022	Dope	Fentanyl (13.2%), Xylazine (64.8%), 4-ANPP (2.0%) [OPI=1.32] ③
9/21/2022	Dope	Fentanyl (14.3%), Xylazine (21.6%), 4-ANPP (7.7%) [OPI=1.43]
9/21/2022	Dope	Fentanyl (21.1%), Xylazine (40.2%), 4-ANPP (4.1%) [OPI=2.11]
9/21/2022	Dope	Fentanyl (18.2%), Xylazine (27.5%), 4-ANPP (8.8%) [OPI=1.82]
9/21/2022	Dope	Fentanyl (16.8%), Xylazine (54.4%), 4-ANPP (2.4%) [OPI=1.68]
9/21/2022	Dope	Fentanyl (16.5%), Xylazine (47.3%), 4-ANPP (2.0%) [OPI=1.65]
9/21/2022	Dope	Fentanyl (16.4%), Xylazine (6.8%), para-Fluorofentanyl (2.4%), 4-ANPP (3.3%), Heroin (trace), Caffeine [OPI=1.72]
9/28/2022	Dope	Fentanyl (9.7%), Xylazine (60.1%), 4-ANPP (4.8%) [OPI=0.97]
9/28/2022	Dope	Fentanyl (11.2%), Xylazine (47.5%), 4-ANPP (1.6%) [OPI=1.12]
9/28/2022	Dope	Fentanyl (13.3%), Xylazine (52.6%), para-Fluorofentanyl (2.4%), 4-ANPP (3.1%) [OPI=1.41]
9/28/2022	Dope	Fentanyl (13.7%), Xylazine (36.0%), 4-ANPP (2.5%) [OPI=1.37]
9/28/2022	Dope	Fentanyl (14.3%), Xylazine (19.9%), 4-ANPP (3.9%), Quetiapine [OPI=1.43] ④
9/28/2022	Dope	Fentanyl (14.8%), Xylazine (31.0%), 4-ANPP (3.4%), Quetiapine [OPI=1.48]

--- ADDITIONAL QUANTITATIVE DATA FOR DOPE SAMPLES ON PAGE 4 & BEYOND ---



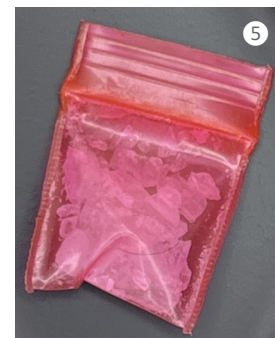


Date	Suspected	Drugs Identified
7/13/2022	Adderall	Methamphetamine (3.4%), Dimethylsulfone (trace) ①
6/1/2022	Ecstasy	Methamphetamine (8.9%)
8/4/2022	MDMA	MDA
8/26/2022	MDMA	MDMA
8/4/2022	Unknown	MDA
6/7/2022	Xanax	Clonazolam
6/15/2022	Xanax	Clonazolam
7/13/2022	Xanax	Alprazolam
8/12/2022	Xanax	Clonazolam
8/31/2022	Xanax	Clonazolam ②



Date	Suspected	Drugs Identified
5/10/2022	K2	ADB-5'Br-BINACA ③
5/10/2022	K2	CH-FUBIATA (1p), BZO-POXIZID (0.2p), ADB-FUBIATA (1p)
5/24/2022	K2	BZO-POXIZID
6/1/2022	K2	BZO-POXIZID
6/7/2022	K2	5F-BZO-POXIZID
7/6/2022	K2	BZO-POXIZID
8/26/2022	K2	[No drugs detected]
8/26/2022	K2	BZO-POXIZID
7/6/2022	Weed	Delta-9-THC
8/26/2022	Weed	Delta-9-THC
9/13/2022	"Weed"	ADB-5'Br-BINACA (1p), ADB-BINACA (0.3p) ④

Date	Suspected	Drugs Identified
6/7/2022	Meth	Methamphetamine
7/6/2022	Meth	Methamphetamine (81.1%) ⑤
8/12/2022	Meth	Methamphetamine
8/31/2022	Meth	Methamphetamine (56.8%)
7/13/2022	Cocaine	Cocaine
8/26/2022	Cocaine	Cocaine (33.6%)
8/26/2022	Cocaine	Cocaine
9/13/2022	Cocaine	Methamphetamine (34.4%), Lidocaine (50.1%) ⑥
5/24/2022	Coke	Cocaine (1p), Caffeine (0.4p), Lidocaine (0.2p)
7/13/2022	Coke	Ketamine, Cocaine (trace)
7/13/2022	Coke	Cocaine (78.3%), Lidocaine (8.1%), Dimethylsulfone (0.1p)
8/4/2022	Coke	Methamphetamine
8/26/2022	Coke	Cocaine (1p), Dimethylsulfone (0.3p), Lidocaine (0.3p), Levamisole (trace)





Date	Suspected	Drugs Identified
5/10/2022	Crack	Cocaine
6/7/2022	Crack	Cocaine (1p), Methylecgonine (0.1p)
6/7/2022	Crack	Cocaine
6/7/2022	Crack	Cocaine (1p), Fentanyl (0.1p), Lidocaine (0.1p), Tramadol (0.1p)
6/7/2022	Crack	Cocaine (1p), Methylecgonine (trace)
6/7/2022	Crack	Cocaine (1p), Levamisole (0.1p), Methylecgonine (0.1p)
6/15/2022	Crack	Cocaine
6/15/2022	Crack	Cocaine
7/6/2022	Crack	Cocaine, Levamisole (trace)
7/13/2022	Crack	Cocaine
7/13/2022	Crack	Cocaine
7/28/2022	Crack	Cocaine
7/28/2022	Crack	Cocaine
7/28/2022	Crack	Cocaine (18.2%), Levamisole (42.2%) ①
7/28/2022	Crack	Cocaine
8/4/2022	Crack	Cocaine (9.0%), Levamisole (16.6%)
8/26/2022	Crack	Cocaine (72.3%)
8/26/2022	Crack	Cocaine (59.4%), Levamisole (3.1%) ②
8/31/2022	Crack	Cocaine (55.3%), Dimethylsulfone (trace), Lidocaine (0.9%), Levamisole (trace)
8/31/2022	Crack	Cocaine (25.7%), Dimethylsulfone, Lidocaine (9.7%), Levamisole (3.3%)

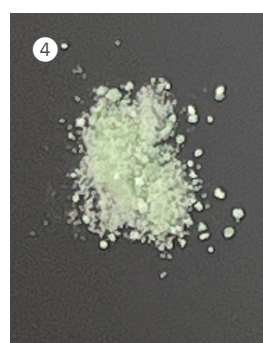
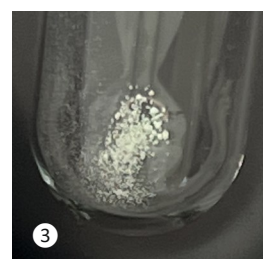
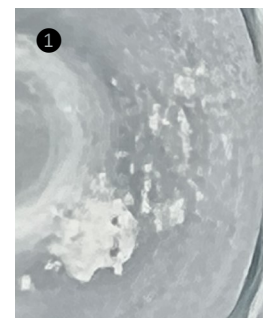


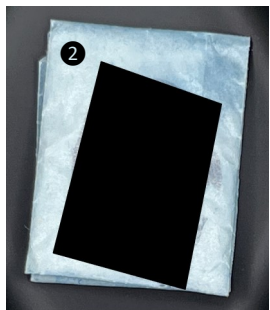
Date	Suspected	Drugs Identified
9/13/2022	Crack	Cocaine (37.6%)
9/13/2022	Crack	Cocaine (39.4%)
9/13/2022	Crack	Cocaine (36.8%)
9/13/2022	Crack	Cocaine (42.0%)
9/13/2022	Crack	Cocaine (35.1%)
9/13/2022	Crack	Cocaine (81.8%)
9/13/2022	Crack	Cocaine
9/28/2022	Crack	Cocaine
5/10/2022	Powder	Cocaine (7.4%), Lidocaine (22.8%), Dimethylsulfone
5/10/2022	Powder	Cocaine
6/7/2022	Powder	Cocaine (1.2%), Lidocaine (3.8%) ③
7/6/2022	Powder	Cocaine (12.2%), Lidocaine (47.1%), Levamisole (trace)
7/28/2022	Unknown	Cocaine (1p), Lidocaine (1p)
9/13/2022	Unknown	Cocaine (40.7%), Lidocaine (18.9%)
9/21/2022	Unknown	Cocaine (0.2%), Lidocaine (0.8%), Dimethylsulfone (large component)
9/28/2022	Unknown	Cocaine (54.9%), Levamisole (6.1%) ④



Department of Public Health
CITY OF PHILADELPHIA

Date	Suspected	Drugs Identified
5/5/2022	Dope	Fentanyl (10.4%), Xylazine (32.0%), 4-ANPP (1.8%) [OPI=1.04]
5/5/2022	Dope	Fentanyl (15.7%), Xylazine (30.4%), 4-ANPP (2.4%) [OPI=1.57]
5/5/2022	Dope	Fentanyl (1p), Heroin (0.2p), Xylazine (22p)
5/5/2022	Dope	Fentanyl (1p), Heroin (0.2p), 4-ANPP, Tramadol (0.2p), Xylazine (0.3p)
5/5/2022	Dope	Fentanyl (1p), <i>para</i> -Fluorofentanyl (0.3p), Xylazine (5.6p), Caffeine (trace)
5/5/2022	Dope	Xylazine, Fentanyl
5/10/2022	Dope	Fentanyl (5.4%), Xylazine (47.6%) [OPI=0.54]
5/10/2022	Dope	Fentanyl (7.7%), Xylazine (31.1%), 4-ANPP (1.8%), Acetylfentanyl [OPI=0.77]
5/10/2022	Dope	Fentanyl (10.8%), Xylazine (33.5%), 4-ANPP (1.4%), Lidocaine (14.3%) [OPI=1.08]
5/10/2022	Dope	Fentanyl (15.2%), Xylazine (39.9%), 4-ANPP (2.4%) [OPI=1.52]
5/10/2022	Dope	Fentanyl (15.4%), <i>para</i> -Fluorofentanyl (3.4%), 4-ANPP (2.4%), Lidocaine (0.4%), Tramadol (trace), Caffeine [OPI=1.65]
5/10/2022	Dope	Fentanyl (21.5%), Xylazine (19.5%), 4-ANPP (10.2%) [OPI=2.15] ①
5/24/2022	Dope	Fentanyl (2.1%), Xylazine (57.1%), 4-ANPP (0.2%), <i>para</i> -Fluorofentanyl, Quinine [OPI=0.21]
5/24/2022	Dope	Fentanyl (7.4%), Xylazine (25.9%), 4-ANPP (0.7%) [OPI=0.74]
5/24/2022	Dope	Fentanyl (8.1%), Xylazine (39.1%), 4-ANPP (3.3%) [OPI=0.81]
5/24/2022	Dope	Fentanyl (9.1%), Xylazine (34.0%), 4-ANPP (1.1%) [OPI=0.91]
5/24/2022	Dope	Fentanyl (11.0%), Xylazine (33.6%), 4-ANPP (1.1%) [OPI=1.10] ②
5/24/2022	Dope	Fentanyl (11.2%), Xylazine (40.5%), 4-ANPP (1.2%) [OPI=1.12] ③
5/24/2022	Dope	Fentanyl (11.8%), Xylazine (38.1%), <i>para</i> -Fluorofentanyl (1.2%), 4-ANPP (2.8%), Caffeine [OPI=1.22]
5/24/2022	Dope	Fentanyl (12.7%), Xylazine (36.5%), 4-ANPP (3.4%), Caffeine [OPI=1.27]
5/24/2022	Dope	Fentanyl (13.0%), Xylazine (38.2%), 4-ANPP (0.8%) [OPI=1.30]
5/24/2022	Dope	Fentanyl
6/1/2022	Dope	Fentanyl (11.4%), Xylazine (47.7%), 4-ANPP (1.1%), Caffeine [OPI=1.14]
6/1/2022	Dope	Fentanyl (13.8%), Xylazine (0.4%), 4-ANPP (2.1%), <i>para</i> -Fluorofentanyl (trace) [OPI=1.38]
6/1/2022	Dope	Fentanyl (14.5%), 4-ANPP (1.9%), <i>para</i> -Fluorofentanyl (trace) [OPI=1.45]
6/7/2022	Dope	Fentanyl (1.6%), 4-ANPP (0.4%), Lidocaine (1.0%), Tramadol [OPI=0.16]
6/7/2022	Dope	Fentanyl (3.9%), 4-ANPP (1.0%), Lidocaine (2.5%), Tramadol [OPI=0.39]
6/7/2022	Dope	Fentanyl (6.6%), Xylazine (33.6%), 4-ANPP (1.3%) [OPI=0.66]
6/7/2022	Dope	Fentanyl (7.7%), Xylazine (44.6%), 4-ANPP (2.9%) [OPI=0.77] ④
6/7/2022	Dope	Fentanyl (9.1%), Xylazine (24.3%), 4-ANPP (1.0%), Quetiapine [OPI=0.91] ⑤
6/15/2022	Dope	Fentanyl (1.3%), Xylazine (45.5%), Heroin (2.0%) [OPI=0.13]
6/15/2022	Dope	Fentanyl (8.0%), Xylazine (19.7%), 4-ANPP (0.5%) [OPI=0.80]
6/15/2022	Dope	Fentanyl (9.0%), Xylazine (21.8%), 4-ANPP (0.8%), Quetiapine [OPI=0.90]
6/15/2022	Dope	Fentanyl (9.6%), Xylazine (20.6%), 4-ANPP (1.0%), Quetiapine [OPI=0.96]
6/15/2022	Dope	Fentanyl (9.7%), Xylazine (21.9%), 4-ANPP (1.1%), Quetiapine [OPI=0.97]
6/15/2022	Dope	Fentanyl (10.9%), Xylazine (43.8%), 4-ANPP (0.9%) [OPI=1.09]
6/15/2022	Dope	Fentanyl (11.4%), Xylazine (36.3%), 4-ANPP (3.1%) [OPI=1.14]
6/15/2022	Dope	Fentanyl (1p), Xylazine (0.7p)

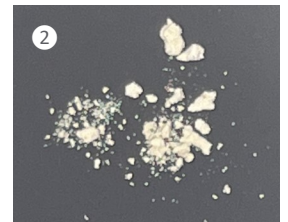




Date	Suspected	Drugs Identified
6/15/2022	Dope	Fentanyl (17.5%), Xylazine (13.6%), 4-ANPP (1.8%) [OPI=1.75]
6/15/2022	Dope	Fentanyl (16.6%), Xylazine (26.1%), 4-ANPP (2.8%) [OPI=1.66]
7/6/2022	Dope	Fentanyl (5.8%), Xylazine (19.4%), 4-ANPP (12.2%) [OPI=0.58]
7/6/2022	Dope	Fentanyl (10.2%), Xylazine (37.5%), 4-ANPP (1.2%) [OPI=1.02]
7/6/2022	Dope	Fentanyl (13.7%), Xylazine (47.4%), 4-ANPP (1.5%) [OPI=1.37]
7/6/2022	Dope	Fentanyl (14.7%), Xylazine (22.9%), 4-ANPP (1.9%), Caffeine [OPI=1.47]
7/6/2022	Dope	Fentanyl (1p), Xylazine (3.9p), 4-ANPP, Cocaine (trace)
7/6/2022	Dope	Fentanyl (1p), Heroin (0.1p), Xylazine (0.4p), 4-ANPP
7/6/2022	Dope	Fentanyl (20.6%), Xylazine (18.7%), 4-ANPP (1.9%), Quetiapine [OPI=2.06]
7/6/2022	Dope	Fentanyl (20.2%), Xylazine (45.3%), 4-ANPP (4.3%), para-Fluorofentanyl (trace) [OPI=2.02] 1
7/6/2022	Dope	Fentanyl (19.9%), Xylazine (17.5%), 4-ANPP (1.7%), Quetiapine [OPI=1.99]
7/13/2022	Dope	Gabapentin, Fentanyl (0.3%), Heroin (trace), 4-ANPP [OPI=0.03] 2
7/13/2022	Dope	Fentanyl (8.8%), Xylazine (44.5%), 4-ANPP (1.6%), Flubromazepam (trace), Bromazolam (trace) [OPI=0.88]
7/13/2022	Dope	Fentanyl (13.6%), Xylazine (21.2%), 4-ANPP (2.0%), Caffeine [OPI=1.36]
7/13/2022	Dope	Fentanyl (13.9%), Xylazine (47.4%), 4-ANPP (5.2%) [OPI=1.39]
7/13/2022	Dope	Fentanyl (14.1%), Xylazine (33.6%), 4-ANPP (1.7%) [OPI=1.41]
7/13/2022	Dope	Fentanyl (15.3%), Xylazine (18.9%), 4-ANPP (1.8%), Quetiapine [OPI=1.53]
7/13/2022	Dope	Fentanyl (15.6%), Xylazine (28.4%), 4-ANPP (3%) [OPI=1.56]
7/13/2022	Dope	Fentanyl (15.9%), Xylazine (19.7%), 4-ANPP (1.9%), Quetiapine [OPI=1.59]
7/13/2022	Dope	Fentanyl (1p), Xylazine (1p), 4-ANPP
7/13/2022	Dope	Fentanyl (17.2%), Xylazine (8.1%), 4-ANPP (3.4%), para-Fluorofentanyl (trace), Heroin (14.0%) [OPI=1.72]
7/28/2022	Dope	Fentanyl (0.6%), Xylazine (12.3%), para-Fluorofentanyl (0.9%), Lidocaine (52.5%), Diphenhydramine [OPI=0.09]
7/28/2022	Dope	Fentanyl (7.5%), Xylazine (10.7%), 4-ANPP (1.6%), Quetiapine [OPI=0.75]
7/28/2022	Dope	Fentanyl (8.1%), Xylazine (13.7%), 4-ANPP (1.8%), Lidocaine (trace), Quetiapine (trace) [OPI=0.81]
7/28/2022	Dope	Fentanyl (8.5%), Xylazine (60.4%), 4-ANPP (0.9%) [OPI=0.85]
7/28/2022	Dope	Fentanyl (13.2%), Xylazine (32.9%), 4-ANPP (0.8%) [OPI=1.32]
7/28/2022	Dope	Fentanyl (17.3%), Xylazine (40.4%), 4-ANPP (7.9%) [OPI=1.73]
8/4/2022	Dope	Fentanyl (5.8%), Xylazine (27.1%), 4-ANPP (2.4%), para-Fluorofentanyl (0.4%), Lidocaine (trace), Caffeine (trace) [OPI=0.59]
8/4/2022	Dope	Fentanyl (6.2%), Xylazine (48.0%), 4-ANPP (0.6%), Lidocaine (trace), Caffeine (trace) [OPI=0.62] 3
8/4/2022	Dope	Fentanyl (6.6%), Xylazine (53.8%), 4-ANPP (0.7%), Lidocaine (trace), Caffeine (trace) [OPI=0.66]
8/4/2022	Dope	Fentanyl (1p), Xylazine (3.2p), Cocaine (trace), 4-ANPP
8/4/2022	Dope	Fentanyl (34.8%), Xylazine (6.0%), 4-ANPP (3.8%) [OPI=3.48]
8/4/2022	Dope	Fentanyl (27.4%), 4-ANPP (11.5%) [OPI=2.74] 4
8/4/2022	Dope	Fentanyl (18.1%), Xylazine (23.9%), 4-ANPP (2.2%), Caffeine [OPI=1.81]
8/12/2022	Dope	Fentanyl (6.1%), Xylazine (45.7%), 4-ANPP (1.5%), Caffeine [OPI=0.61]
8/12/2022	Dope	Fentanyl (7.2%), Xylazine (21.1%), 4-ANPP (3.5%) [OPI=0.72]
8/12/2022	Dope	Fentanyl (7.3%), Xylazine (37.8%), 4-ANPP (1.0%), Bromazolam, Caffeine, Procaine [OPI=0.73]
8/12/2022	Dope	Fentanyl (8.8%), Xylazine (26.5%), 4-ANPP (0.9%) [OPI=0.88]



Date	Suspected	Drugs Identified
8/26/2022	Dope	Fentanyl (1.8%), Xylazine (44.2%), 4-ANPP [OPI=0.18]
8/26/2022	Dope	Fentanyl (4.1%), Xylazine (45.0%), 4-ANPP (2.9%), Caffeine [OPI=0.41]
8/26/2022	Dope	Fentanyl (4.8%), Xylazine (40.6%), 4-ANPP (0.5%), Caffeine [OPI=0.48]
8/26/2022	Dope	Fentanyl (8.6%), Xylazine (30.0%), 4-ANPP (2.7%), Lidocaine (1.7%) [OPI=0.86] ①
8/26/2022	Dope	Fentanyl (10.5%), Xylazine (41.5%), 4-ANPP (2.1%), Methamphetamine (2.9%) [OPI=1.05]
8/26/2022	Dope	Fentanyl (12.6%), Xylazine (37.5%), 4-ANPP (3.5%) [OPI=1.26]
8/26/2022	Dope	Fentanyl (15.8%), Xylazine (18.4%), 4-ANPP (2.0%), Caffeine [OPI=1.58]
8/26/2022	Dope	Fentanyl (1p), Xylazine (0.6p), 4-ANPP
8/26/2022	Dope	Fentanyl (23.7%), Xylazine (6.1%), 4-ANPP (4.2%), Heroin (3.0%) [OPI=2.37] ②
8/26/2022	Dope	Fentanyl (23.5%), Xylazine (33.5%), 4-ANPP (2.5%), para-Fluorofentanyl (trace) [OPI=2.35]
8/26/2022	Dope	Fentanyl (22.8%), Xylazine (6.5%), 4-ANPP (4.3%), Heroin (trace) [OPI=2.28]
8/26/2022	Dope	Fentanyl (18.3%), Xylazine (15.8%), 4-ANPP (4.7%), Diphenhydramine (trace) [OPI=1.83]
8/31/2022	Dope	Fentanyl (6.0%), Xylazine (43.1%), 4-ANPP (0.8%), Caffeine [OPI=0.60]
8/31/2022	Dope	Fentanyl (7.6%), Xylazine (46.7%), para-Fluorofentanyl (0.3%), 4-ANPP (4.9%) [OPI=0.77]
9/13/2022	Dope	Fentanyl (3.8%), Xylazine (53.8%), 4-ANPP (0.3%), Quetiapine [OPI=0.38] ③
9/13/2022	Dope	Fentanyl (3.9%), Xylazine (51.5%), 4-ANPP (0.6%), Lidocaine (0.3%) [OPI=0.39]
9/13/2022	Dope	Fentanyl (7.9%), Xylazine (54.2%), 4-ANPP (3.6%) [OPI=0.79]
9/13/2022	Dope	Fentanyl (9.4%), Xylazine (46.2%), 4-ANPP (4.2%) [OPI=0.94] ④
9/13/2022	Dope	Fentanyl (9.6%), Xylazine (49.6%), 4-ANPP (1.4%) [OPI=0.96]
9/13/2022	Dope	Fentanyl (10.6%), Xylazine (48.5%), 4-ANPP (1.7%) [OPI=1.06]
9/13/2022	Dope	Fentanyl (11.6%), Xylazine (33.1%), 4-ANPP (0.7%) [OPI=1.16]
9/13/2022	Dope	Fentanyl (12.2%), Xylazine (34.9%), 4-ANPP (1.0%), Caffeine [OPI=1.12]
9/13/2022	Dope	Fentanyl (13.4%), Xylazine (34.1%), 4-ANPP (1.1%) [OPI=1.34]
9/13/2022	Dope	Fentanyl (1p), Xylazine (6p), 4-ANPP (0.3p)
9/13/2022	Dope	Fentanyl (1p), Dimethylsulfone (2.3p), Lidocaine (0.3p), Tramadol (trace)
9/13/2022	Dope	Fentanyl (1p), Xylazine (9p), 4-ANPP (0.1p)
9/13/2022	Dope	Fentanyl (20.1%), Xylazine (42.2%), 4-ANPP (2.6%) [OPI=2.01]
9/13/2022	Dope	Fentanyl (19.4%), Xylazine (27.7%), 4-ANPP (9.3%) [OPI=1.94]
9/21/2022	Dope	Fentanyl (1p), Xylazine (18.1p), 4-ANPP (0.1p)
9/21/2022	Dope	Fentanyl (1p), Xylazine (7.2p), 4-ANPP (0.2p)
9/21/2022	Dope	Fentanyl (1p), Xylazine (0.8p), Lidocaine (0.3p)
9/21/2022	Dope	Fentanyl (1p), Xylazine (1p), 4-ANPP (0.1p)
9/21/2022	Dope	Fentanyl (1p), Xylazine (2.3p)
9/21/2022	Dope	Fentanyl (4.6p), Xylazine (16p), 4-ANPP (1p)
9/28/2022	Dope	Fentanyl (1p), Xylazine (13.4p), Lidocaine (4.2p), 4-ANPP (0.4p), Acetaminophen (0.1p)



— — — — END OF RESULTS — — — —



For more information about our quantitative testing and results, download “Fentanyl, Purity, Potency, & Synthesis”

Quantitative Assessment of Drug Purity: Some results reported herein are designated in a true quantitative manner and expressed as a drug purity (%). The purity value is analytically determined through complex laboratory testing. In short, a defined weight of the drug material is prepared and the sample is compared to external calibration models which allow for accurate determination of the amount of a specified drug present. The weight of the drug vs. the weight of the total sample defines purity (multiplied by 100 to be reported as a percent).

Example: Powder weighs 11 mg, fentanyl quantifies at 3 mg >>> Fentanyl purity = 27.3%

Semi-Quantitative Assessment of Drug Portions: Some results reported herein are designated in a semi-quantitative manner by calculating parts (“p”) based on data acquired during laboratory testing. In general, the primary drug is assigned as one part (1p) and other drugs are reported accordingly in proportion to the primary drug (e.g., 10p, 0.3p). **Reported drug parts do not translate to drug purity.**

Examples: Amount of xylazine is four times greater than fentanyl = Fentanyl (1p), Xylazine (4p)
Amount of heroin is half the amount of fentanyl = Fentanyl (1p), Heroin (0.5p)